

Contempo

BUTANE COLLECTION



by
zippo®

PRESENTING THE NEW

Contempo

BUTANE COLLECTION BY ZIPPO

... a sophisticated new collection of lighters. Zippo designed the Contempo line for the now generation. Contempo lighters say a lot about the people who buy them ... that they know what they want and how to get it ... and that they won't settle for anything less than the best.

Contempo lighters are stylish in the sleek silhouettes of today, yet classic in the Zippo tradition of quality and permanence. Models are available in standard and trim styles in a contemporary array of luxurious finishes.

The Contempo Butane Collection by Zippo ... for those who want the finer things in life and show it.

TORTOISE

Hues of translucent brown capture the light and impart a look of casual elegance. The perfect lighter for those quiet times or special occasions.

A) No. 1416 Trim
Retail \$59.95

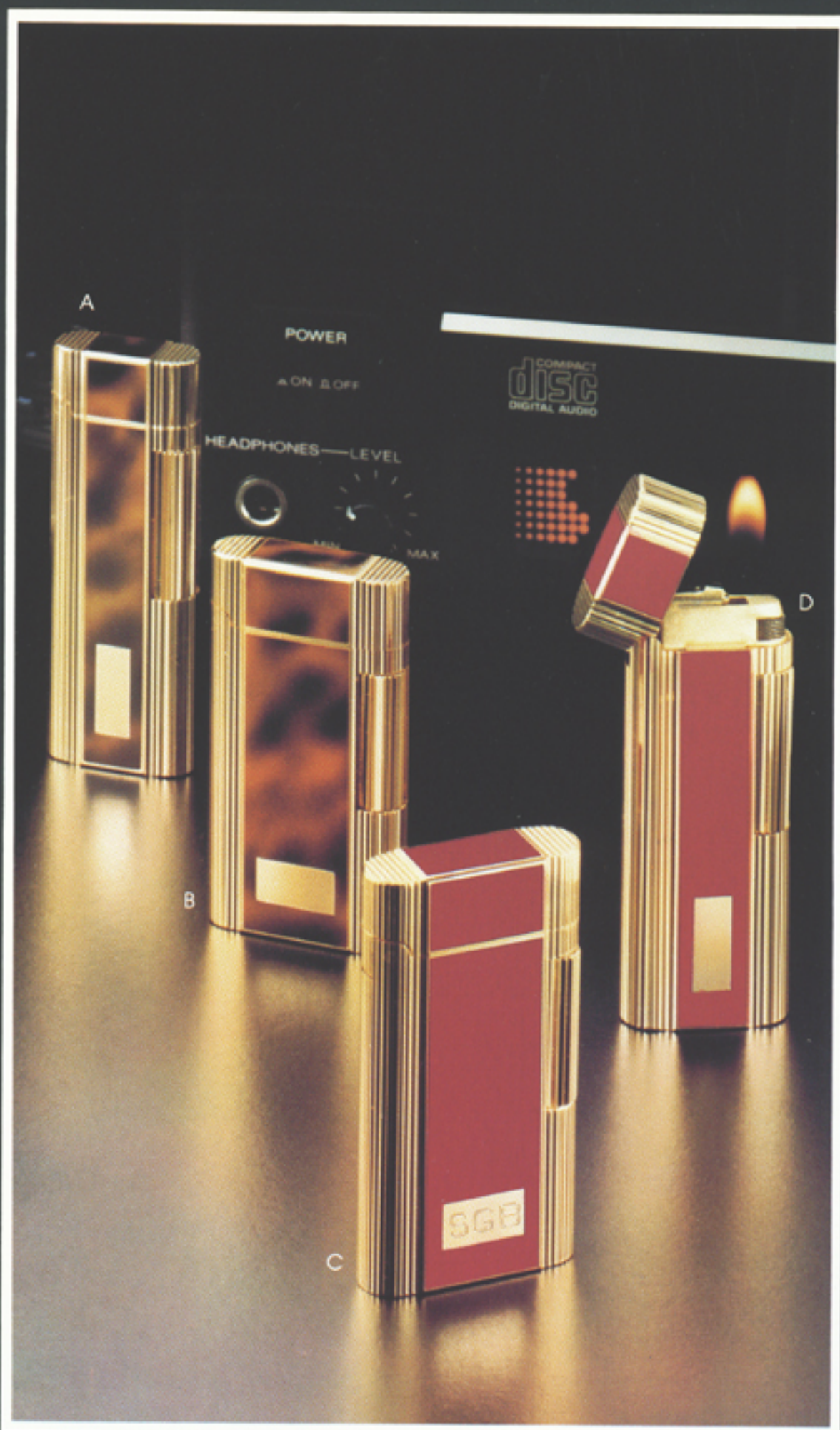
B) No. 716 Standard
Retail \$59.95

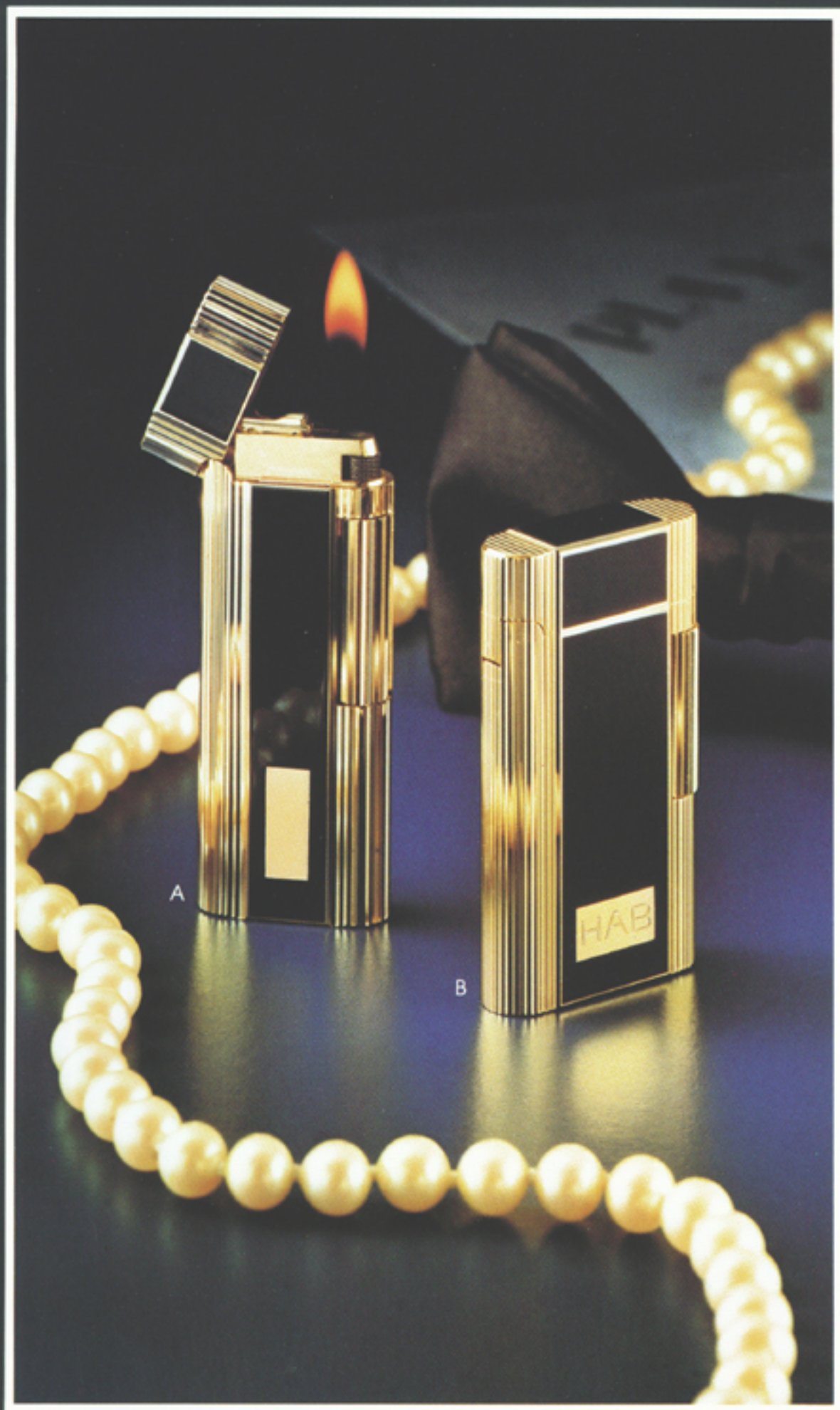
BURGUNDY

The look of rich, vintage wine, deeply toned and definitely dignified. Expresses a taste for the finer things in life.

C) No. 714 Standard
Retail \$59.95

D) No. 1414 Trim
Retail \$59.95





BASIC BLACK

Stepping out with subtle sophistication, Zippo offers a posh look that is dashing, yet understated. Promises success for that special event.

A) No. 1415 Trim
Retail \$59.95

B) No. 715 Standard
Retail \$59.95

Conte



GOLD MESH

Like fine jewelry from the most elegant emporium, this lighter exudes style when anything less than the best is out of the question.

A) No. 712 Standard . . . Retail \$39.95

B) No. 1412 Trim . . . Retail \$39.95

ZIPPO

BUTANE COLLECTION BY ZIPPO



BURNISHED GOLD

Cultured... scholarly... refined ... need we say more?
For those who appreciate the value of classics
and collect them.

A) No. 1413 Trim ... Retail \$39.95

B) No. 713 Standard ... Retail \$39.95

BRIGHT CHROME

For the upwardly mobile... Zippo shapes up a lustrous lighter that rises to the occasion and absolutely shines anywhere.

A) No. 1401 Trim
Retail \$29.95

B) No. 701 Standard
Retail \$29.95

FLUTED CHROME

Designed with grey flannel types in mind. A lighter with lines that move in the right direction... Up!

C) No. 702 Standard
Retail \$29.95

D) No. 1402 Trim
Retail \$29.95





LOUVER GOLD

Going for the gold in Zippo's contest of status-conscious lighters. A look that will always finish first.

- A) No. 1411 Trim
Retail \$39.95
- B) No. 711 Standard
Retail \$39.95

LOUVER CHROME

State-of-the-art in technology and design...a lighter that meets today's challenges and tomorrow's successes.

- C) No. 703 Standard
Retail \$29.95
- D) No. 1403 Trim
Retail \$29.95

Gift Box

The Contempo lighter is dramatically presented in this impressive gift box designed with a lift to emphasize the lighter's unique features. In grey felt with a satin-lined cover.

Butane Fuel

The "light stuff" for the Contempo lighter comes attractively packaged in this handy cylinder containing butane fuel. Compact size stores easily.

Galaxy of Lights Display

Magnificence in motion . . . Contempo lighters appear to float effortlessly in a galaxy of 21 clear plastic hemispheres that revolve in this spectacular counter display. Interior lighting illuminates the entire Contempo collection and a key lock provides security. A space-age display for lighters that are truly out of this world.
20"H x 14"W x 10"D



LIFETIME WARRANTY

Congratulations

You are the owner of a fine Zippo refillable butane lighter. This contemporary styled Zippo lighter is of the highest quality and has passed rigid quality control checks.

Your Zippo lifetime warranty states that this lighter shall be free from defects in materials, components or workmanship. This warranty does not cover the finish nor does it apply to any defect, malfunction, or damage caused by or resulting from misuse, abuse or negligence or from any modification to the product.

This warranty gives you specific legal rights and you may also have other rights which vary from state to state.

To obtain service under this warranty, please return your lighter with information as to date and location of purchase, accompanied by \$4.00 to cover postage and handling to:

Zippo

Zippo Manufacturing Company
33 Barbour Street
Bradford, PA 16701